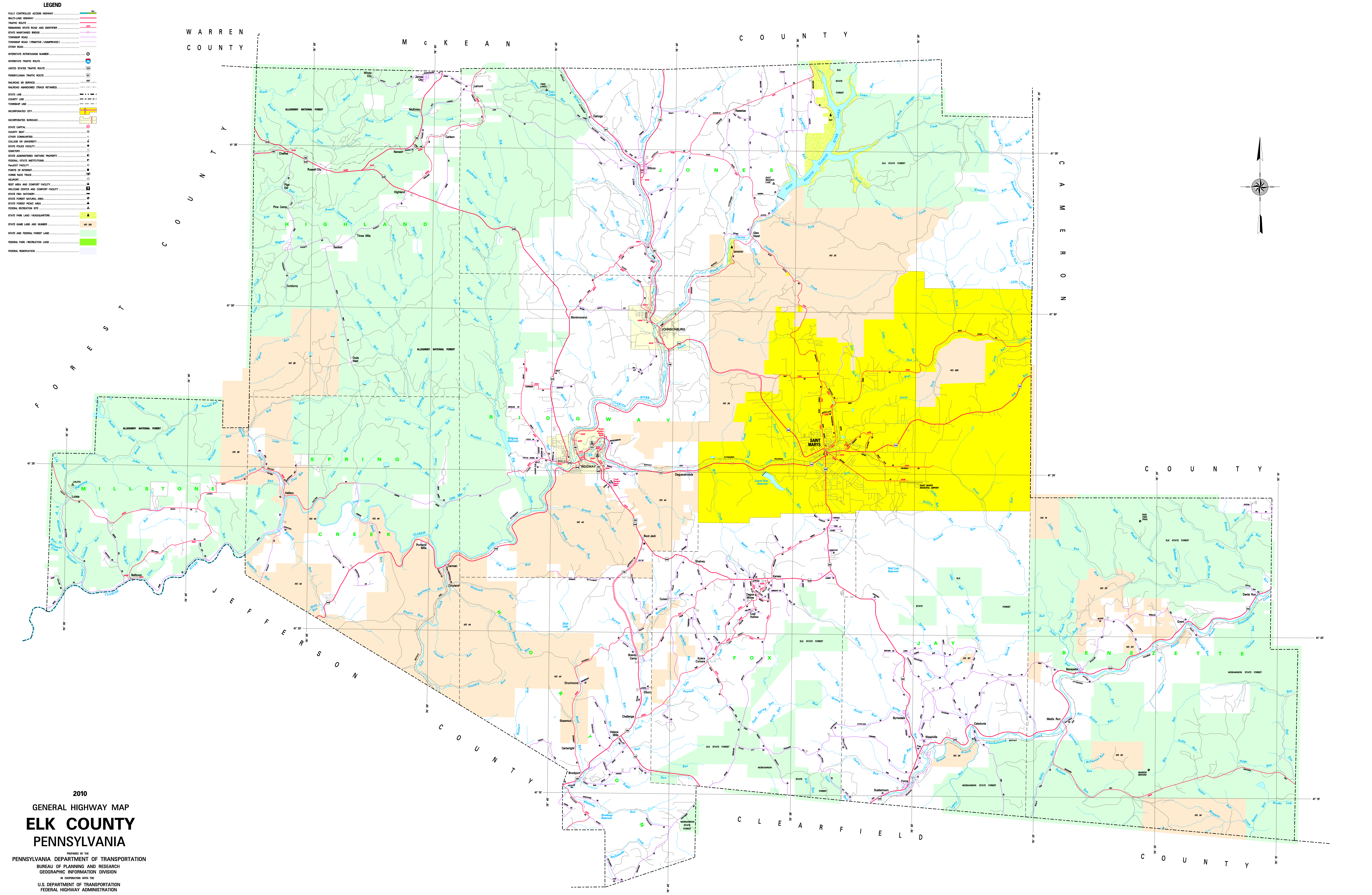


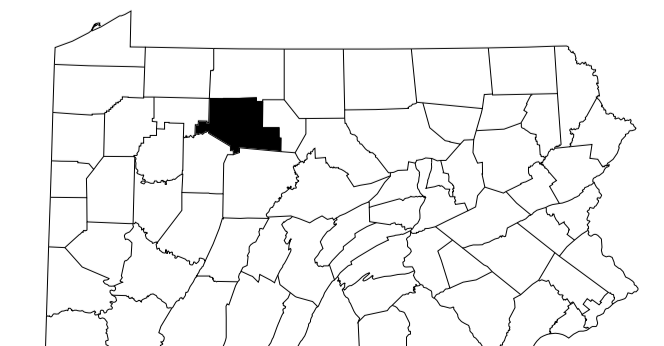
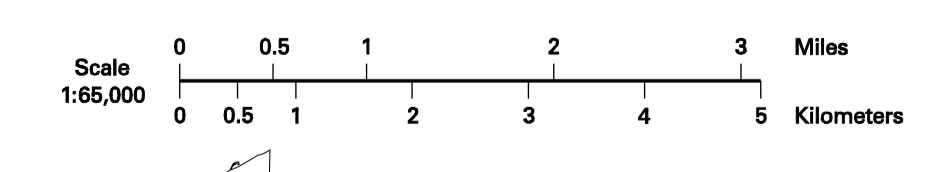
- LEGEND**
- FULLY CONTROLLED ACCESS HIGHWAY
 - MULTI-LANE HIGHWAY
 - TRUNK ROUTE
 - RESERVED STATE ROAD AND CENTER
 - STATE MAINTAINED BRIDGE
 - TOWNSHIP ROAD
 - TOWNSHIP ROAD (PRIVATE/UNIMPROVED)
 - OTHER ROAD
 - INTERSTATE INTERCHANGE NUMBER
 - UNITED STATES TRUCK ROUTE
 - PENNSYLVANIA TRUCK ROUTE
 - RAILROAD BY BRIDGE
 - RAILROAD ABANDONED TRACK RETAINED
 - STATE LINE
 - COUNTY LINE
 - TOWNSHIP LINE
 - INCORPORATED CITY
 - INCORPORATED BOROUGH
 - STATE CAPITAL
 - COUNTY SEAT
 - CORNER COMPLETION
 - COLLEGE OR UNIVERSITY
 - STATE POLICE FACILITY
 - CONCRETE
 - FEDERAL SERVICE RESERVATION
 - PAVEDOT FACILITY
 - POINTS OF INTEREST
 - HORSE RACE TRACK
 - HELIPORT
 - REST AREA AND COMFORT FACILITY
 - WELCOME CENTER AND COMFORT FACILITY
 - STATE FISH WARDEN
 - STATE FOREST INQUIRY AREA
 - STATE FOREST POND AREA
 - FEDERAL RECREATION SITE
 - STATE PARK LAND / HEADQUARTERS
 - STATE GAME LAND AND NUMBER
 - STATE AND FEDERAL FOREST LAND
 - FEDERAL PARK / RECREATION LAND
 - FEDERAL RESERVATION



2010
GENERAL HIGHWAY MAP
ELK COUNTY
PENNSYLVANIA

PREPARED BY THE
 PENNSYLVANIA DEPARTMENT OF TRANSPORTATION
 BUREAU OF PLANNING AND RESEARCH
 GEOGRAPHIC INFORMATION DIVISION

IN COOPERATION WITH THE
 U.S. DEPARTMENT OF TRANSPORTATION
 FEDERAL HIGHWAY ADMINISTRATION



POPULATION OF COUNTY (2000 Census) 38,312
 AREA OF COUNTY (SQ. MI.) 499
 (SQ. KM.) 1,299

PROJECTION - NAD 83 DATUM

COPIES OF THIS MAP ARE AVAILABLE AT NOMINAL COST
 CONTACT:
 PENNSYLVANIA DEPARTMENT OF TRANSPORTATION
 SALES STORE
 P.O. BOX 2028
 HARRISBURG, PENNSYLVANIA 17105 - 2028
 TELEPHONE (717) 797-4744

USERS NOTING ERRORS OR OMISSIONS ON THIS MAP
 ARE URGED TO REPORT THEM TO:
 PENNSYLVANIA DEPARTMENT OF TRANSPORTATION
 BUREAU OF PLANNING & RESEARCH
 GEOGRAPHIC INFORMATION DIVISION
 P.O. BOX 2028
 HARRISBURG, PENNSYLVANIA 17105 - 2028
 E-MAIL: rs-pennstate@state.pa.us

COPYRIGHT © COMMONWEALTH OF PENNSYLVANIA
 ALL RIGHTS RESERVED

