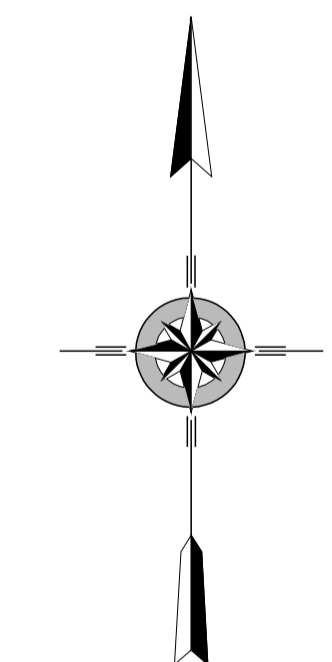
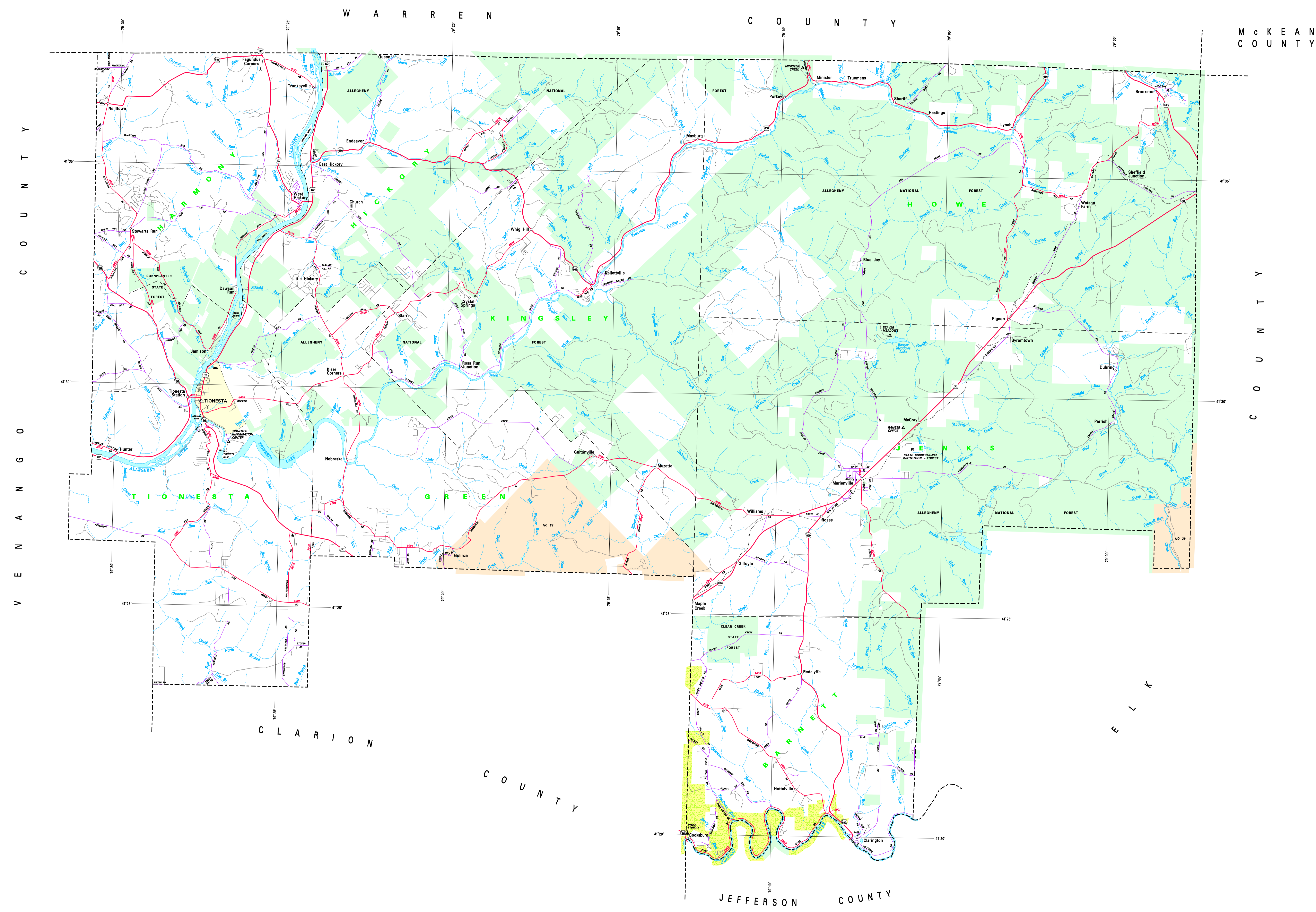


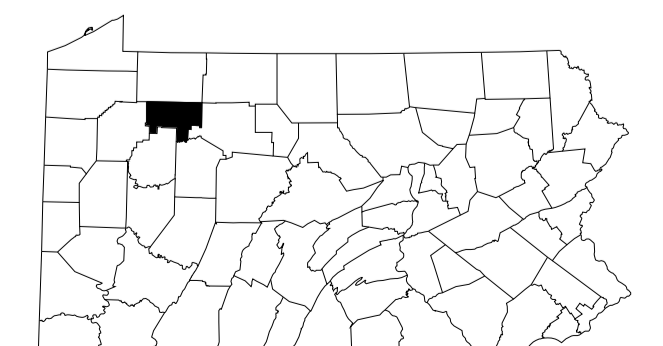
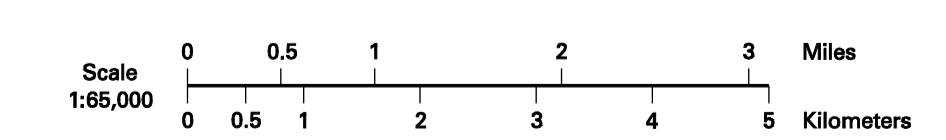
LEGEND

FULLY CONTROLLED ACCESS HIGHWAY	
MULTI-LANE HIGHWAY	
TRAFFIC ROUTE	
RESERVED STATE ROAD AND CENTERLINE	
STATE MAINTAINED BRIDGE	
TOWNSHIP ROAD	
TOWNSHIP ROAD (PENDING / UNAPPROVED)	
OTHER ROAD	
INTERSTATE INTERCHANGE NUMBER	
INTERSTATE TRAFFIC ROUTE	
UNITED STATES TRAFFIC ROUTE	
PENNSYLVANIA TRAFFIC ROUTE	
MARKING BY SERVICE	
MARKING AROUND TRACK RETAINER	
STATE LINE	
COUNTY LINE	
TOWNSHIP LINE	
INCORPORATED CITY	
INCORPORATED BOROUGHS	
STATE CAPITAL	
COUNTY SEAT	
OTHER COMMERCE	
COLLEGE OR UNIVERSITY	
STATE POLICE FACILITY	
CENETER	
STATE ADMINISTERED HISTORIC PROPERTY	
FEDERAL STATE RESTORATION	
PAWDOOT FACILITY	
POINTS OF INTEREST	
HORSE AND TRACK	
HELIPORT	
REST AREA AND COMFORT FACILITY	
WELCOME CENTER AND COMFORT FACILITY	
STATE FISH HATCHERY	
STATE FOREST POND AREA	
FEDERAL RECREATION SITE	
STATE PARK LAND (HEADQUARTERS)	
STATE GAME LAND AND NUMBER	
STATE AND FEDERAL FOREST LAND	
FEDERAL PARK / RECREATION LAND	
FEDERAL RESERVATION	



2010
GENERAL HIGHWAY MAP
FOREST COUNTY
PENNSYLVANIA

PREPARED BY THE
PENNSYLVANIA DEPARTMENT OF TRANSPORTATION
BUREAU OF PLANNING AND RESEARCH
GEOGRAPHIC INFORMATION DIVISION
IN COOPERATION WITH THE
U.S. DEPARTMENT OF TRANSPORTATION
FEDERAL HIGHWAY ADMINISTRATION



POPULATION OF COUNTY (2000 Census) 4846
AREA OF COUNTY (SQ. MILES) 622
AREA OF COUNTY (SQ. KILOMETERS) 1606
POLYCONIC PROJECTION - NAD 83 DATUM

COPIES OF THIS MAP ARE AVAILABLE AT NOMINAL COST
CONTACT:
PENNSYLVANIA DEPARTMENT OF TRANSPORTATION
GAIL B. STONE
HARRISBURG, PENNSYLVANIA 17105 - 2828
TELEPHONE: (717) 787-4848
E-MAIL: rs-pennsdotmaps@state.pa.us

USERS NOTING ERRORS OR OMISSIONS ON THIS MAP
ARE REQUESTED TO REPORT THEM TO:
PENNSYLVANIA DEPARTMENT OF TRANSPORTATION
BUREAU OF PLANNING & RESEARCH
GEOGRAPHIC INFORMATION DIVISION
P.O. BOX 3868
HARRISBURG, PENNSYLVANIA 17105 - 3868
E-MAIL: rs-pennsdotmaps@state.pa.us