

Allegheny National Forest Region Motorcycle Road Trips & Map



Allegheny National Forest Region Allegheny National Forest & Kinzua Sky Walk



Longhouse National Scenic Byway rated #1 fall scenic drive in Pennsylvania by USA Today.

Each Road Leads to Natural Beauty

Countless roads twist and turn through the beautiful Allegheny National Forest Region of northwestern Pennsylvania offering scenic stretches of winding two-lane roads, challenging terrain, and spectacular scenery. This brochure features seven road trip adventures for single and multi-day rides.

Gear Up for the Ultimate Touring Experience. From spring to fall this area is a goldmine for riders looking to turn up the tunes and escape technology. In early June, the pink blossoms of the mountain laurel start blooming. Fall foliage in the Forest offers a spectacular range of colors – blazing orange, brilliant yellows, rich golds, and ruby reds. Prime fall color is usually the first two weeks of October. In summer, the Forest is lush, cool, and every shade of green imaginable.

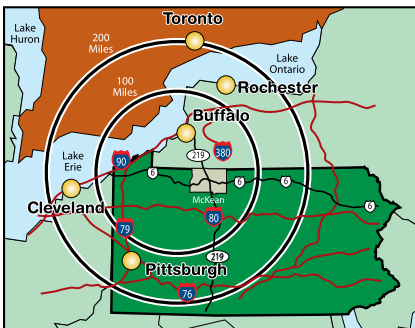


"One of the top 10 most scenic skywalks in the world," *The Culture Trip, U.K.*

the Allegheny Reservoir. Route 6 offers a look at authentic small-town America.

Plan your Road Trip! From Canada, and points north, travel the QEW to Route 219 south. From the south, follow I-80 to Route 66, or Route 153 north into the Forest. Check visitANF.com for weather, upcoming events, and additional downloadable maps.

You're on the Trail to Something Big



Nearby... But a World Away

City	Estimated Travel Distance (miles)
Buffalo, NY	95
Cleveland, OH	194
Erie, PA	120
Pittsburgh, PA	142
Rochester, NY	164
Toronto, Canada	198

Information:
1-800-473-9370
visitANF.com

Allegheny National Forest Region Motorcycle Road Trips & Map



TRAIL CENTRAL™
McKean County

visitANF.com
1.800.473.9370

Allegheny National Forest Region Motorcycle Road Trips & Map

Pennsylvania
pursue your happiness

Riding Season Spring, Summer and Fall

*Take the less-traveled roads,
to experience some of the
most beautiful scenery in the U.S.*



Spring The green of spring is different in the forest, light, fresh with a touch of sunshine on the leaves. Wildflowers add to the color, the songbirds return to fill the air with music. Plan a scenic ride through the Forest to admire the rebirth of spring. Birding enthusiasts will enjoy Timberdoodle Flats an interpretive trail in the forest, Marilla Reservoir, and Big Bend Overlook.



Summer Lush green forests, cool mountain streams. Scenic overlooks with clear blue skies overhead. Perfect for hiking, biking and enjoying the great outdoors. Cabins and tent campsites are readily available in the Forest. Because of the vast number of public hiking trails, this area is known as Trail Central.



Fall In autumn, nature puts on the show of the year. Warm, sun-soaked days. Crisp, starlit nights. Enjoy an endless canopy of crimson and gold. Prime leaf season in this "neck" of the woods is early October. Fall is the perfect season for motorcycle touring and travel. Make your lodging reservations early for this tremendous spectacle!



ALLEGHENY HIGHLANDS

Touring on Scenic Route 6

Perfect for touring on your motorcycle, **Route 6** is the major west-east corridor through the northern counties of Pennsylvania. Visitors from the west can get onto **Route 6** from the first Interstate 90 exit in Pennsylvania or from Erie by way of **Route 19** or **Route 79**.

As you travel through the gentle rolling farmlands of western Pennsylvania, the terrain changes to increasingly rugged hills. You are entering the Allegheny Highlands with elevations of more than 2,040 feet above sea level. Trees practically swallow the highway as it winds higher in elevation. The world's finest hardwoods are grown in this area.

Just before Ludlow, watch for signs on the right that lead to the Tionesta National Scenic Area. This is the largest strand of ancient trees in the Allegheny National Forest. Stop and explore the labyrinth of Olmsted Manor or hike into the Forest to view a waterfall – Hector Falls.

Continue east on **Route 6**. Tour and taste at CJ Craft Distillery, Logyard Tap Room, Twisted Vine Beverage, Table 105, and Flickerwood Wine Cellars. Foodies will enjoy exploring Bell's Market.

Travel east on **Route 6**. You will pass historic Nebo Chapel before entering Mt. Jewett. Koffee Sol offers delicious Swedish pastries. From Mt. Jewett, turn onto the Kinzua Bridge Scenic Byway to the Kinzua Bridge State Park. This is the home of the amazing Kinzua Sky Walk, "One of the top ten most scenic skywalks in the world." A new Kinzua Bridge Visitors Center is open year round. The park offers hiking trails and picnic areas.



Return to **Route 6**, travel east to the charming Victorian village of Smethport. Stroll the streets lined with mansions built in the 1800s by Lumber Barons. A self-guided walking tour brochure is available at the kiosk in front of the McKean County Court House. Visit the Old Jail Museum to learn about the famous Civil War Bucktail Regiment.



Traveling east, you will pass Lynn Hall a premier example of post-modern architecture. Next stop, Port Allegany, home of Serenity Glass Park – a sparkling gem. In the summer, free musical concerts are offered in the town square. Overnight at the Inn on Maple Street Bed & Breakfast. Continuing east on **Route 6** is the PA Lumber Museum.



Allegheny National Forest Region Motorcycle Road Trips & Map



■ SOUTHEAST GATEWAY

Into Nature's Beauty *I-80 Exit at Penfield,
Route 153, Route 219, South to North*

As you exit from **I-80** onto **Route 153 North** you are just approaching the highest point on **I-80** east of the Mississippi River. It is an appropriate start into the Allegheny National Forest Region of the Pennsylvania Wilds. Driving northward, you will be climbing into the Allegheny Plateau of the Allegheny Mountain Range.

Soon after exiting off **I-80**, you pass S.B. Elliott State Park on the right, a few miles farther along **Route 153**, you pass the access road to Parker Dam State Park. This is part of the Elk Scenic Byway and the southwest corner of the Pennsylvania elk range.

After dropping into a steep valley at Penfield, you begin climbing again over Boone Mountain, then dropping to the intersection with **Route 219**. Turn right and head north to Ridgway.

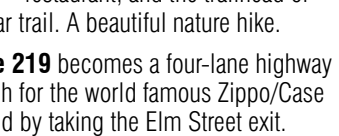
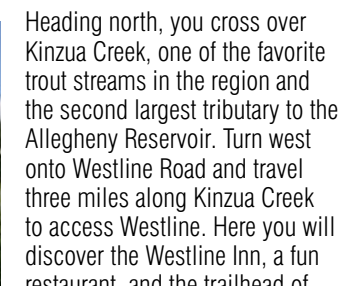
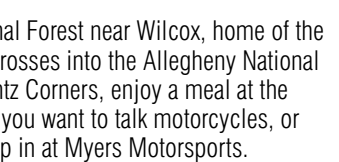
The highway skirts along the eastern edge of the Allegheny National Forest near Wilcox, home of the Winery at Wilcox. **Route 219** then crosses into the Allegheny National Forest just past Lantz Corners. In Lantz Corners, enjoy a meal at the Barrel House Restaurant & Tavern. If you want to talk motorcycles, or would like to rent an ATV or UTV, stop in at Myers Motorsports.



Heading north, you cross over Kinzua Creek, one of the favorite trout streams in the region and the second largest tributary to the Allegheny Reservoir. Turn west onto Westline Road and travel three miles along Kinzua Creek to access Westline. Here you will discover the Westline Inn, a fun restaurant, and the trailhead of the Kinzua Valley Trail, a 7-mile linear trail. A beautiful nature hike.

Return to, and continue north, **Route 219** becomes a four-lane highway just before arriving at Bradford. Watch for the world famous Zippo/Case Museum on your left. It is easy to find by taking the Elm Street exit.

The City of Bradford is your gateway to the eastern shore of the Allegheny Reservoir, Marilla Reservoir and the Marilla Trail System. Other sites to explore are the Penn Brad Oil Museum, the Marilyn Horne Museum, the University of Pittsburgh at Bradford, and the nearby Allegany State Park in New York.



■ PA ROUTE 66 TO KANE

I-80 to the ANF



Approaching from the west on **Interstate 80** to the Allegheny National Forest (ANF) and Kane, the heart of the world's finest hardwood forest.

This route into the Allegheny National Forest passes close to Cook Forest State Park, location of the finest strand of

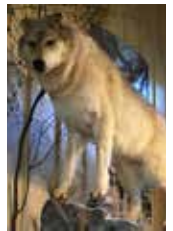
ancient timber in Pennsylvania, including the third tallest tree in the eastern United States. Several state record trees are in this park.



Approaching Marienville on **Route 66**, you can see the true plateau nature of the Allegheny Highlands. Here, miles from the major creeks and rivers, the terrain is gently rolling.

Route 66 is a slow, two-lane, low traffic road, which winds its way north through beautiful forests to Kane, where it connects to **Route 6** and **Route 321** north. Kane is the southern entry to the Allegheny Reservoir. Enjoy the scenic ride.

In Kane, the McCleery Discovery Center, in the Kane Historic Depot, tells the story of the Lobo Wolves. Do a little shopping at Field Street Boots, or Artwork on the Summit, which features local artisan wares—pottery, jewelry, paintings, carved wooden bowls. You can wear your new treasures or have them shipped home!



Local restaurant favorites include Texas Hot Lunch-4 Sons – ask for their signature “Texas Hot,” and Table 105 focusing on farm to table. At Bell's Meat & Poultry check out the local fresh produce, and maybe catch a glimpse of Bigfoot.

Just east of Kane, along **Route 321** is a trailhead to part of the 96-mile section of North Country National Scenic Trail. Park at the trailhead and hike in a little distance to view an active beaver dam.

The entire North Country Trail, when complete will run from Crown Point, NY to Lake Sakakawea, N.D., the longest continuous footpath in the United States.



Motorcycle Road Trips & Map



LONGHOUSE NATIONAL SCENIC BYWAY

The Longhouse National Scenic Byway circles the Kinzua Creek Arm of the Allegheny Reservoir through some of the most beautiful scenery on the Allegheny National Forest. It is a 36-mile loop from Kane.

Leave Kane on **Route 321 North**. This road enters the Allegheny National Forest just outside of Kane. The actual start of the scenic byway is about eight miles from Kane at the intersection with Longhouse Drive. Continue on **Route 321** past Red Bridge. This is the head of the Kinzua Creek Arm. A campground, cabins and bank fishing are to the left.



Route 321 follows the reservoir for a short distance, and then begins to rise into the highlands through a beautiful forest of hardwoods and hemlock. Nearing the top of the plateau, you pass the Old Powerhouse Museum, an original timepiece from the glory days of oil in this region.

The Bradford Ranger Station is located at the intersection of **Routes 321** and **59**. You can find virtually any information about the Allegheny National Forest here, including topo maps for trail enthusiasts.

Turn left on **Route 59** toward the Allegheny Reservoir. Along this stretch of the loop, you pass the trailhead for Morrison Trail. This trail has two loops, the 5.3-mile Morrison Trail Loop which passes boulder fields and forgotten homesteads, and the 8.3-mile Rimrock Trail Loop, which drops to the shore of the Allegheny Reservoir.

About a mile past the Morrison Trailhead is the entrance to Rimrock, a magnificent rock outcrop and overlook above the Kinzua Creek Arm of the Allegheny Reservoir. This area offers picnic areas and hiking trails.

As you travel on **Route 59**, you will see the Kinzua/Wolf Run Marina on your right, just before crossing the Allegheny Reservoir on the Morrison Bridge. Immediately past the bridge, turn left onto Longhouse Drive. The access road to Jakes Rocks is about a mile up Longhouse Drive. This impressive rock outcrop offers a spectacular vista over the Allegheny Reservoir.

Longhouse Drive continues a winding course high above the Kinzua Creek Arm, passing the Dewdrop Recreation Area, Elijah Run Boat launch and Kiasutha Recreation Area before ending back at **Route 321**. Turn right to return to Kane.



EASTERN CONTINENTAL DIVIDE LOOP

Smethport, Emporium, Benezette, Saint Marys

A fun loop for riding from Smethport, along **Route 6** to Port Allegany, south past Emporium to see the elk at Benezette, to Saint Mary's to taste some brews and then north returning to Smethport. You can also do this loop from Port Allegany, both Smethport and Port Allegany offer great B&Bs.

Begin your road trip by heading east from Smethport on **Route 6**, to Port Allegany, you will pass Lynn Hall, a prime example of early post-modern architecture which is open for tours.

In Port Allegany stop for some photos at Serenity Glass Park. Then travel east on **Route 6**, turning south onto **Route 155**.

Close to the McKean County/Cameron County border, you crest the Eastern Continental Divide. You can see the land dropping very steeply ahead. Past here, streams flow

southward and eventually into the Atlantic Ocean.

At Emporium, turn south onto **Route 120**, then onto **Route 555** southwest to Benezette. Watch for the sign for the Elk Country Visitors Center. Turn here to learn about the elk herd in Pennsylvania. This is where you have a good chance of viewing elk in the fields around the center.

Continue on **Route 555** to **Route 255** north to Saint Marys where Straub Brewery has the "eternal tap", stop for a tasting. Now turn east onto **Route 120**, to the intersection of **Route 46** north to return to Smethport.

In Smethport, order a signature pizza and a brew at the Corner Bistro. Walk to Hamlin Lake to enjoy the view and an easy hiking trail around the lake. In Smethport's Mansion District – The Mansion District Inn & The Blackberry Inn are open as B&Bs.



Allegheny National Forest Region

Motorcycle Road Trips & Map

Pennsylvania
pursue your happiness

TRACY RIDGE LOOP

NY I-86, Route 219, Route 321, Route 346

Follow **Route 219 South** from **Interstate 86** to Bradford for the start of the 39.5-mile loop through the highest and most remote land in the Allegheny National Forest. Drive this loop evenings or early mornings for the best opportunities to observe white-tailed deer, wild turkeys, porcupines or even black bears and coyotes.

Exit from **Route 219** at Bradford onto **Route 346 West**. Route markers will direct you along Main Street, Mechanic Street, then out of town on West Washington Street, past the University of Pittsburgh at Bradford campus.



About six miles off **Route 219**, you pass the Marilla Reservoir. This picturesque reservoir area features a wooden covered bridge, a series of interconnecting hiking trails, and is a favorite spot for kayaking and fishing – it is generously stocked.



You enter the Allegheny National Forest about 8.5 miles into this drive. At the intersection of **Route 321 & Route 346**, if you head straight on **Route 321**, about 5.5 miles farther, the road will take you to the Willow Bay Recreation Area. Located along the shoreline of the Allegheny Reservoir this is a great place for views of the reservoir. This area also offers rustic cabins, campgrounds, picnic areas and has kayaks and

paddle boards for rent. Returning to **Route 346**, backtrack to turn onto **Route 321**. **Route 321** starts rising immediately toward the top of the plateau. After driving about three miles and climbing about 700 feet in elevation, you arrive at Tracy Ridge. A large meadow is an excellent place to watch for deer. Just past this meadow is the entrance to Tracy Ridge Recreation Area. Here you will find a campground and trailheads.

Past Tracy Ridge, **Route 321** drops to the head of Sugar Bay, then climbs again to a junction with **Route 59**. Turn left on **Route 59** toward Bradford. This part of the loop will give you the best view that the Allegheny Highlands is actually a plateau. In most other areas, the land is so deeply eroded that it has the appearance of hills.

The trailhead for Timberdoodle Flats is located along the right-hand side of **Route 59**. Timberdoodle Flats features two loop trails totaling 1.5 miles. There's the Woodcock Trail with 12 interpretive stops or the shorter gravel surfaced Bluebird Trail with six interpretive stops.

Turn left onto **Route 770**. Soon after passing Pine Acres Golf Course, the road goes into a long decline toward **Route 219** at Custer City. Turn left on **Route 219** to return to Bradford.



BRADFORD-ELDRED-ROCK CITY LOOP

Route 346, Route 321, Route 219



This 48-mile loop takes you to a World War II museum and spectacular rock formations. Beginning in downtown Bradford, take **Route 346 East**. Exit at Foster Brook, staying on **Route 346 East** heading towards Eldred. Just before Eldred, watch for the sign for the Schoolhouse Village Shoppes – a unique shopping destination.

Route 346 ends at a "T" intersection with **Route 446**. Turn right into Eldred. The Eldred World War II Museum is on the right.



This world class museum is history you can see, touch and feel. Allow at least two hours to tour the museum. It is open 10 am to 4 pm Tuesday through Saturday, 1 to 4 pm Sunday – April through December.

After visiting the museum, turn back onto **Route 446**, heading north to Olean, N.Y. You cross into New York 21.5 miles from Bradford. The highway destination changes to **Route 305**. As you pass through Portville, N.Y., look for the dikes to your left. These hold back the floodwaters of the Allegheny River. Turn left at the "T" intersection in Portville, staying on **Route 305** to the opposite side of town then go straight onto **Route 417** into Olean.

In Olean, two recommended sites to visit are Cutco-KaBar Visitors Center and Good Times of Olean. In downtown Olean, turn left onto **Route 16**, which makes a steep climb to Rock City Park, 35.6 miles from the start. An admission fee will give you access to an amazing vista and trail which winds through a field of gigantic boulders formed about 320 million years ago. Rock City Park is open daily May 1 through October 31.

Continue along **Route 16** about two miles to a historical marker by the Knapp Creek Fire Hall which notes that this quiet little village was once an oil boom town that supported at least a dozen saloons, and that this was the birthplace of aviation pioneer William T. Piper.

Past Knapp Creek, **Route 16** follows the top of the narrow ridge into Pennsylvania, where the road designation changes to **Route 646**, then goes into a steep drop to **Route 346**. Turn right at the intersection and follow **Route 346** back to Bradford.



Allegheny National Forest Region

Motorcycle Road Trips & Map

Pennsylvania
pursue your happiness



- Allegheny Highlands – PA Route 6
- Southeast Gateway
- Pennsylvania Route 66 to Kane
- Longhouse National Scenic Byway
- Eastern Continental Divide Loop
- Tracy Ridge Loop
- Bradford-Eldred-Rock City Loop

