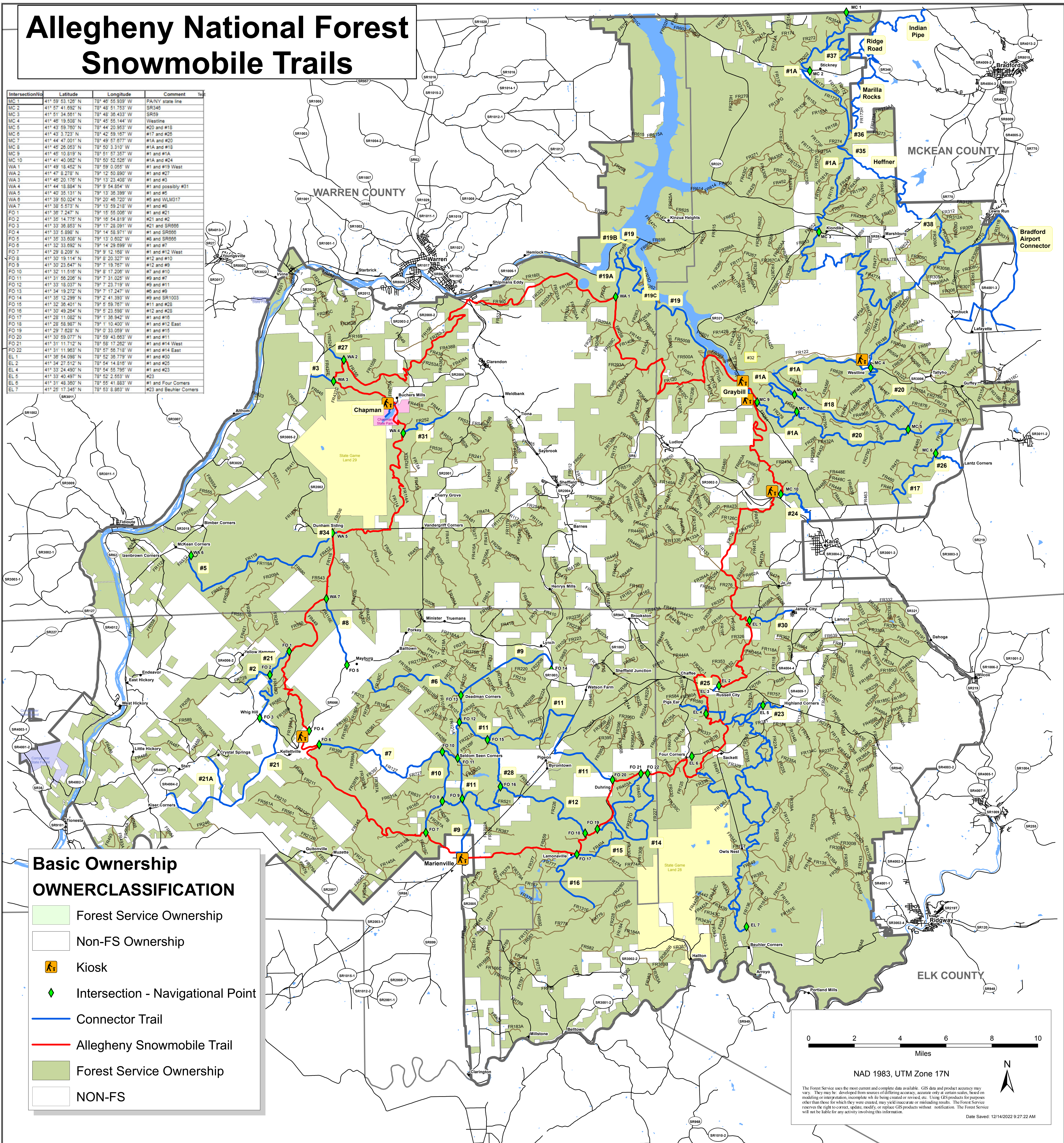


# Allegheny National Forest Snowmobile Trails

Intersection/No	Latitude	Longitude	Comment	Total
MC 1	41° 59' 53.128" N	78° 48' 55.333" W	PA/NY state line	
MC 2	41° 57' 41.852" N	78° 48' 51.753" W	SR345	
MC 3	41° 51' 34.561" N	78° 48' 36.433" W	SR59	
MC 4	41° 48' 19.508" N	78° 45' 55.144" W	Westline	
MC 5	41° 43' 59.760" N	78° 44' 20.953" W	#20 and #18	
MC 6	41° 43' 3.723" N	78° 42' 55.167" W	#17 and #26	
MC 7	41° 44' 47.001" N	78° 49' 57.677" W	#1A and #20	
MC 8	41° 45' 28.053" N	78° 50' 3.310" W	#1A and #18	
MC 9	41° 45' 10.819" N	78° 51' 57.357" W	#1 and #1A	
MC 10	41° 41' 40.362" N	78° 50' 52.528" W	#1A and #24	
WA 1	41° 49' 18.452" N	78° 59' 0.055" W	#1 and #19 West	
WA 2	41° 47' 8.278" N	79° 12' 50.890" W	#1 and #21	
WA 3	41° 46' 20.176" N	79° 13' 23.408" W	#1 and #3	
WA 4	41° 44' 18.884" N	79° 9' 54.854" W	#1 and possibly #31	
WA 5	41° 40' 35.131" N	79° 13' 36.399" W	#1 and #5	
WA 6	41° 39' 50.024" N	79° 20' 45.720" W	#5 and WLM317	
WA 7	41° 38' 5.573" N	79° 13' 59.218" W	#1 and #6	
FO 1	41° 36' 7.247" N	79° 15' 55.005" W	#1 and #21	
FO 2	41° 35' 14.775" N	79° 16' 54.819" W	#21 and #2	
FO 3	41° 33' 36.853" N	79° 17' 28.091" W	#21 and SR008	
FO 4	41° 33' 5.885" N	79° 14' 58.971" W	#1 and SR056	
FO 5	41° 35' 33.608" N	79° 13' 0.802" W	#6 and SR056	
FO 6	41° 32' 33.652" N	79° 14' 28.099" W	#1 and #7	
FO 7	41° 29' 8.209" N	79° 9' 12.168" W	#1 and #12 West	
FO 8	41° 30' 19.114" N	79° 8' 20.327" W	#12 and #10	
FO 9	41° 30' 23.847" N	79° 7' 19.767" W	#12 and #9	
FO 10	41° 32' 11.516" N	79° 8' 17.206" W	#7 and #10	
FO 11	41° 31' 58.208" N	79° 7' 31.025" W	#9 and #7	
FO 12	41° 33' 18.037" N	79° 7' 23.719" W	#9 and #11	
FO 13	41° 34' 19.272" N	79° 7' 17.247" W	#6 and #9	
FO 14	41° 35' 12.299" N	79° 2' 41.393" W	#9 and SR1003	
FO 15	41° 32' 36.401" N	79° 5' 59.767" W	#11 and #28	
FO 16	41° 30' 49.264" N	79° 5' 23.596" W	#12 and #28	
FO 17	41° 28' 11.082" N	79° 1' 35.942" W	#1 and #16	
FO 18	41° 28' 58.987" N	79° 1' 10.400" W	#1 and #12 East	
FO 19	41° 29' 7.823" N	79° 2' 33.959" W	#1 and #15	
FO 20	41° 30' 59.077" N	78° 59' 43.863" W	#1 and #11	
FO 21	41° 31' 11.712" N	78° 58' 17.282" W	#1 and #14 West	
FO 22	41° 31' 11.963" N	78° 57' 56.718" W	#1 and #14 East	
EL 1	41° 36' 54.098" N	78° 52' 36.779" W	#1 and #30	
EL 2	41° 34' 27.512" N	78° 54' 14.818" W	#1 and #25	
EL 4	41° 33' 24.490" N	78° 54' 55.795" W	#1 and #23	
EL 5	41° 33' 40.497" N	78° 52' 2.553" W	#23	
EL 6	41° 31' 48.390" N	78° 55' 41.883" W	#1 and Four Corners	
EL 7	41° 25' 17.345" N	78° 53' 8.853" W	#23 and Beuhler Corners	



## Basic Ownership OWNERCLASSIFICATION

- Forest Service Ownership
- Non-FS Ownership
- Kiosk
- Intersection - Navigational Point
- Connector Trail
- Allegheny Snowmobile Trail
- Forest Service Ownership
- NON-FS



NAD 1983, UTM Zone 17N

The Forest Service uses the most current and complete data available. GIS data and product accuracy may vary. They may be developed from sources of differing accuracy, accurate only at certain scales, based on modeling or interpretation, incomplete with the being created or revised, etc. Using GIS products for purposes other than those for which they were created, may yield inaccurate or misleading results. The Forest Service reserves the right to correct, update, modify, or replace GIS products without notification. The Forest Service will not be liable for any activity involving this information.

Date Saved: 12/14/2022 9:27:22 AM